

Industrial Enclosures

INDUSTRIAL ENCLOSURE BROCHURE

“We just going to control clean environment”



KAIZEN AIRTECH SOLUTIONS

Office No. B-3, Jayguru Niwas, Khedekar Nagar,
Near Navale Hospital, Narhe,
Pune-411041, Maharashtra, India

Email: info@kaizenairtech.com Website: www.kaizenairtech.com

Kaizen's Industrial Enclosures

Industrial enclosures or industrial partition is a generally used technical term which is used to define a closed engineering structure or separation for a particular area specifically designed and built for the purpose of reduction, minimization or attenuation of noise and heat generated by the machineries or equipment's. Industrial enclosure is the most suitable solution to meet all storage requirement in an industry and also to monitor the day to day activities going on in the manufacturing plant. Kaizen Airtech solutions is the leading manufacturer & supplier of Industrial enclosures and partitions caters various industries for their diverse industrial requirements.

Kaizen Airtech solutions offers the complete turnkey solution under one roof right from designing, manufacturing till execution using prefabricated steel & insulated sandwich panels (PUF/EPS/ROCKWOOL/GLASSWOOL/SS304) as its core raw material.



Applications:

- Insulated enclosures to protect machineries & equipment's from heat.
- Dust proof enclosures
- Pre-fabricated partitions for separation of divisions within the plant
- Acoustic enclosures to reduce the noise generated from machineries
- Storage enclosures for protecting valuable goods inside the plant.
- Sound proof enclosures for giving noise free environment inside the plant to work.

1. Insulated enclosures to protect machineries & equipment's from heat.

Modular enclosures are made up of individual panels that can be removed easily to facilitate access to enclosed machinery and equipment. They can even be completely disassembled and relocated in a different area of a facility—all without loss.

Enclosures can be environmentally controlled to maximize performance by protecting sensitive equipment from harsh plant or outdoor environments.



Industrial Partitions
Customizable production space dividing walls and partitions

2. Dust proof enclosures

Kaizen Airtech solutions provide dust proof, hygiene enclosure according required cleanliness. We have done many projects in cleanroom to control cleanliness and parameters such as temperatures and humidity at required level for various cleanroom classes.



3. Acoustic Enclosure:

Individual standard panels can be used as sound barriers in various interior and exterior scenarios. Outdoor applications include placement around:

- water pumping stations
- electrical transformers
- mechanical equipment
- transportation corridors

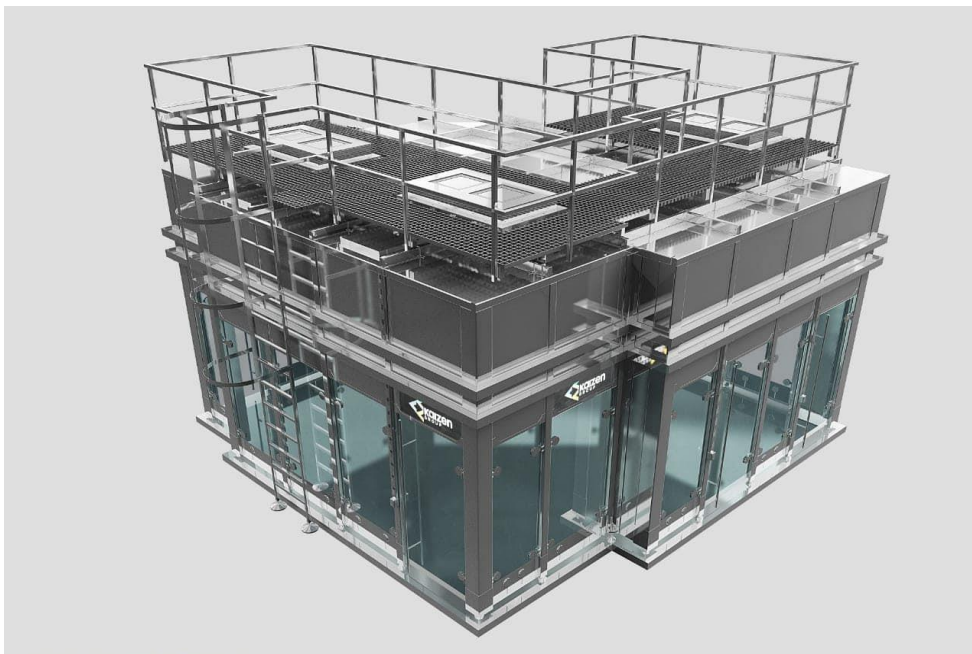
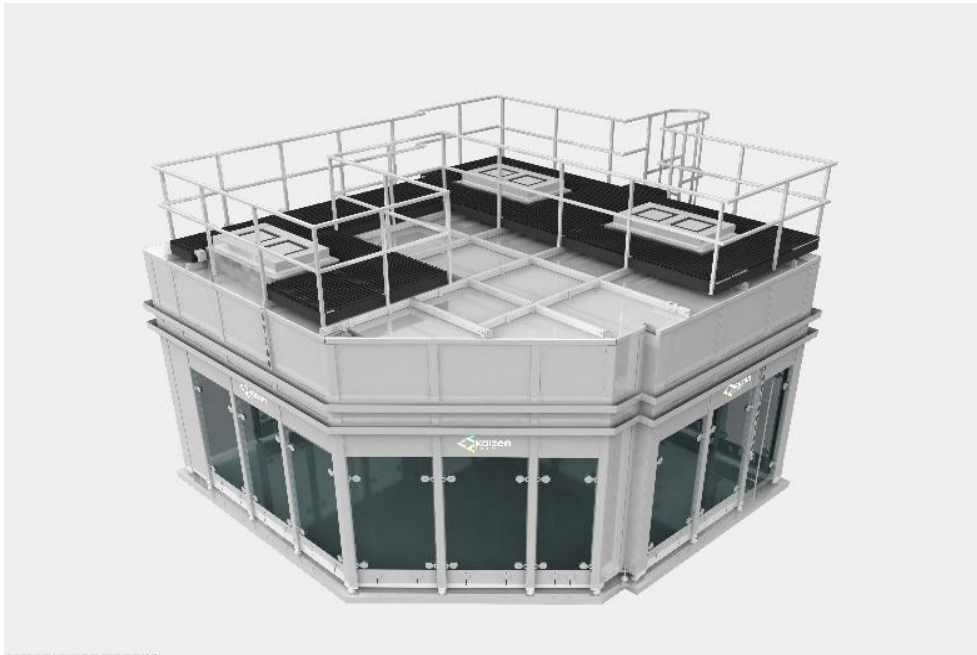


4. Fabricated Enclosures:

There are a number of different types of commercial and industrial enclosures that can be fabricated and manufactured from metals.

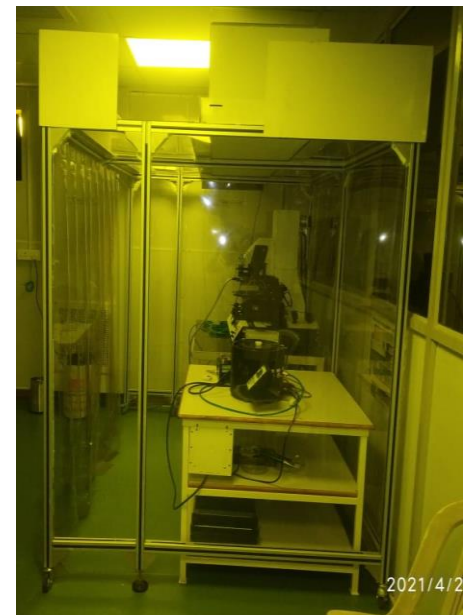
We design and manufacture fabricated enclosure according to requirement in SS304 which can be used for various applications. We made filler unit for Coco Cola project in SS304 to fill-up bottles in controlled environment.

Filler units for coca cola project:



5. Freestanding Enclosures:

Modular wall systems and support columns, it is easy to create all types of freestanding rooms and walls. These cost-effective structures utilize less material as they require no roof/with roof and can utilize lighting, fire suppression and HVAC service from the existing building.



6. Negative pressure isolation room:

Negative pressure isolation rooms, airborne infection isolation rooms (AIIR) are used by patients for hospitals and medical centres to prevent cross-contaminations and airborne infections from spreading throughout the facility.

These rooms are commonly recommended by the Centre for Disease Control and Prevention (CDC) to help protect the public from diseases and infections that spread easily like tuberculosis, measles, and the coronavirus (COVID-19).

Central or point-of-use HEPA filters capable of removing particles 0.3 μm in diameter for supply (incoming) air.

Well-sealed rooms

- Proper construction of windows, doors, and intake and exhaust ports
- Smooth, cleanable ceiling tiles
- Walls sealed above and below the ceiling

Ventilation to maintain ≥ 12 ACH

Directed air flow: design that filters air into one side of room, across patient's bed and then exits on opposite side of room

Self-closing door on all room exits

Back-up ventilation equipment.

